



EXPRESS SERVICE DIVISION

24-Hour Monitoring
service@esi-express.com



ESI-EXPRESS

3330 East Louise Drive, Suite 300

Meridian, Idaho 83642

Phone: (208) 362-3040

SERVICE@ESI-EXPRESS.COM

COMPANY OVERVIEW

OVERVIEW

For 50 years, Engineered Structures, Inc. (ESI) has earned a reputation for excellence in construction across multiple sectors nationwide including commercial structures, multifamily properties, grocery, retail, healthcare, education, manufacturing, industrial and more.

Headquartered in Meridian, Idaho, ESI is Idaho’s largest privately-owned construction company consistently ranked in the Top 400 General Contractors in the nation according to Engineering New Record (ENR). ESI is deeply committed to making an enduring impact in the communities we serve.

ESI EXPRESS SERVICE DIVISION

ESI’s Express division is a knowledgeable and reliable team of service managers and hands-on, self-performing service superintendents. Our team is on-call 24/7 to handle any size job from check-stand repairs to large structure remodels. We partner with national customers for tenant improvements, repairs, general service and maintenance and warranty work.

Once we obtain an opportunity from our customer, we handle all logistics planning with customer service focus front of mind. Express has in-house estimating resources as well as strategic resources and buying power in all major markets. We construct the plan and schedule to least impact our customers and operations. We develop a plan to come in under budget and ahead of schedule. During the project, communication is key and our protocol is regular weekly, or as needed owner reports with photos and progress. Our main objectives are first choice customer service, communication and finishing strong on every project.

- REMODEL AND RENOVATION
- PREVENTATIVE BUILDING MAINTENANCE
- EQUIPMENT REPAIR



SCOPES OF WORK

- | | | |
|------------------------|--------------------------|--------------------------|
| Ada Carts | Facility Maintenance | Recycling/Disposal |
| Apartment Unit Turns | Fixturing | Refrigeration |
| Appliance Repair | Flooring | Restaurant Equipment |
| Building Code Upgrades | Furniture Moving | Restroom Repairs |
| Carpeting | General Carpentry | Restoration/ Remediation |
| Cart Caddy | Grease Trap Repair | Roofing |
| Cart Corrals | HVAC | Snow Removal |
| Ceiling Tiles | Landscaping & Irrigation | Structural |
| Check Stands/POS | Leak Detection | Stucco |
| Concrete | Lighting | Wall Hanging |
| Decor | Paint | Water Damage |
| Demolition | Parking Lot Repair | Windows And Doors |
| Drywall | Plumbing | Warranty |
| Electrical | Power Washing | |

EXTENSIVE PROJECT EXPERIENCE

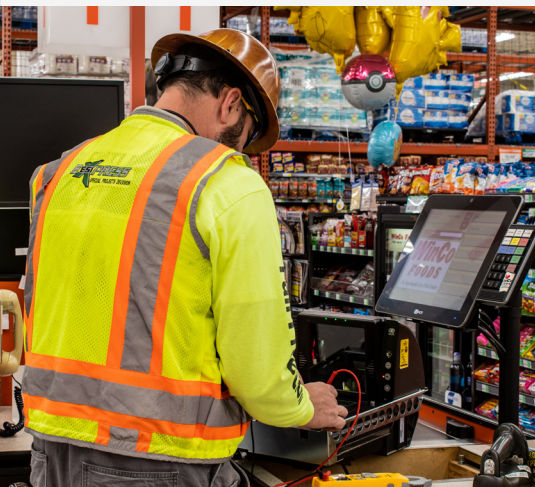
Service Division's promise to our clients is to provide professional, exceptional quality contractors they can rely on anywhere on time, every time - no matter how remote the location or what time of day. We understand that business hours are not always 8-5 and when you need our assistance, you need it now! Licensed across the U.S. ensuring that your need, planned or crisis, will be addressed as soon as possible.

- Timely Response
- National Coverage
- Professional Service
- Minimized Sales Disruption
- Customer Safety
- Peace of Mind

NATIONAL CUSTOMERS

Some of our national customers include:

Whole Foods	1,000+ work orders
Starbucks	7,000+ work orders
WinCo	10,000+ work orders
Fred Meyer	1,000+ work orders
Shamrock Foods	500+ work orders
Krispy Kreme	500+ work orders
Albertsons	300+ work orders
QFC Grocery	300+ work orders



CONTACT INFORMATION

ESI-EXPRESS' MAIN OFFICE:

Firm Name: ESI-Express
Address: 3330 E. Louise Drive, Suite 300
Meridian, Idaho 83642
Telephone: (208) 362-3040
Fax: (208) 362-3113
Email: service@esi-express.com

EXECUTIVE POINT OF CONTACT

Name: Kevin Castner, Division Director
Mobile: (208) 565-9406
Email: KevinCastner@esi-express.com

BUSINESS DEVELOPMENT POINT OF CONTACT

Name: Tanner Job, Business Development Manager
Mobile: (208) 616-3030
Email: TannerJob@esiconstruction.com



RESPONSE TIMES:

Emergency:	4-hour response / resolved in 24 hours
Urgent:	24-hour response / resolved in 48 hours
Standard:	48-hour response / resolved within 7 days
Planned:	48-hour response / resolved as scheduled